

V48 Irodaház

1138 Budapest, Váci út 48.



Location

With its location at the very entrance of the Váci út corridor, the building benefits excellent visibility and accessibility by car and public transport. V 48 is U-shaped on plan bordered by three streets. Its entrance is on the Váci út, one wing runs along the Röntgen utca the other along the Ipoly utca.

Fit out

Raised floors, Suspended ceilings, Sprinklers, BMS, External shading system, Dual power supply

BUILDING INFORMATION

Building status	Planned
Building class	A
Green certificate	BREEAM Very Good
Total area	11 341 m
Gross leasable area	11 341 m
Gross building area	13 445 m
Average floor size	2 400 m
Above ground floors	4
Garage parking lots	117

LEASE TERMS

Asking rent	After log in
Service charges	After log in
Garage parking rent	After log in

These property particulars are only of information character and do not constitute offer to conclude any agreement within the meaning of provisions of Hungarian Civil Code (Act 5 of 2013)

+36 1 336 42 00
info@officemap.hu

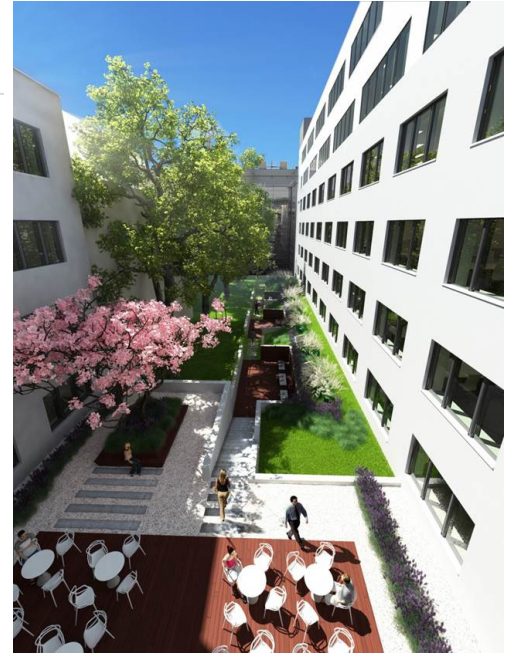


Typical floorplan



UNITS

Floor	Space	Availability
-------	-------	--------------



+36 1 336 42 00
info@officemap.hu

